

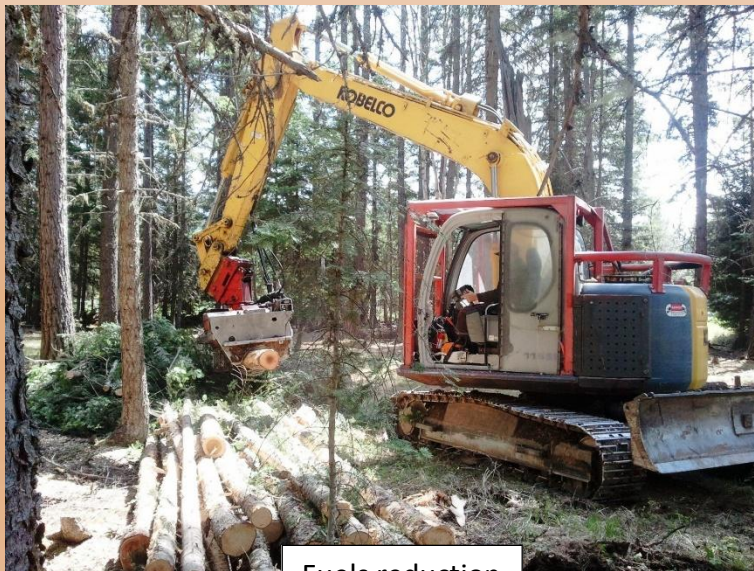
2018 Forest Stewardship Program



— SWAN VALLEY —
CONNECTIONS

The Purpose of Swan Valley Connections Forest Stewardship Program is to:

- Help landowners understand their forest's current condition and the natural and biological processes.
- Assist with the development and implementation of short and long-term forest management plans and activities.
- Secure financial assistance for landowners to complete on the ground forest management plans and activities.



Fuels reduction

Swan Valley Connections Accomplishments Since 2004

- Provided more than \$1,246,000 in cost-share assistance to landowners for forest management.
- Provided technical assistance to 1,317 landowners.
- Treated 2,306 acres to improve forest health and reduce wildfire hazardous fuel loads.
- Completed or certified long term forest stewardship plans on over 3,500 acres of private land.
- Provided work for 24 local contractors.
- Produced 34,806 tons (\approx 1,243 truck loads) of wood fiber for local mills.

Funding Available to Cover 50-75% of Project Costs!

Reduce Wildfire Risk to Your Home, Property, and Neighbors

Improve Fire Fighter Safety and Effectiveness



Wildfire Happens - Be Prepared

Contact for Technical Assistance

Mike Mayernik
Stewardship Forester
Swan Valley Connections
406-754-3137
Mike@SVConnections.org

Useful Internet Links:

Swan Valley Connections:

<http://www.swanvalleyconnections.org/>

Forest Stewardship:

<http://www.msuextension.org/forestry/principles.htm>
<http://www.msuextension.org/forestry/downloads.htm#mfsp>
<http://www.fs.fed.us/foresthealth/management/index.shtml>
<http://dnrc.mt.gov/forestry/Assistance/default.asp>
<http://dnrc.mt.gov/forestry/Nursery/>
<http://www.firewise.org/>
<http://www.firesafemt.org/>

Insects and Diseases of Forests:

http://www.fs.fed.us/r1-r4/spf/fhp/field_guide/
<http://www.forestpests.org/>
<http://dnrc.mt.gov/forestry/Assistance/Pests/default.asp>
http://beetleblock.com/html/prevention_stragies.html
<http://www.invasive.org/>

Weeds:

<http://www.mtweed.org/weed-identification/>
<http://dnrc.mt.gov/cardd/publications/TIPS%20for%20weeds.pdf>
<http://www.invasive.org/>
<http://www.ipm.montana.edu/CropWeeds/index.htm>
<http://www.msuextension.org/invasiveplantsMangold/noxioussub.html>

Recreation:

<http://fwp.mt.gov/recreation/>

Water Quality:

<http://dnrc.mt.gov/forestry/Assistance/Practices/fpractices.asp>

Wildlife:

<http://fwp.mt.gov/wildthings/>

The funding for this project is derived in full or in part from a federal award of the U.S. Forest Service, Department of Agriculture, subawarded by the Montana Department of Natural Resources and Conservation, Forestry Division.

In accordance with Federal law and U.S. Department of Agriculture policy, this institution is prohibited from discriminating on the basis of race, color, national origin, sex, age, or disability. (Not all prohibited bases apply to all programs.)

To file a complaint of discrimination, write USDA, Director, Office of Civil Rights, Room 326-W, Whitten Building, 1400 Independence Avenue, SW, Washington, DC 20250-9410 or call (202) 720-5964 (voice and TDD). USDA is an equal opportunity provider and employer.